



Schindler 5000

Stylish, functional and flexible





A flexible solution that unifies form and function. An all-round elevator applicable to multiple building types, with outstanding architectural flexibility for car, door and shaft dimensions. Swiss precision engineering and latest technologies assure a smooth and safe user experience.

Schindler 5000

Stylish, functional and flexible

Schindler 5000 offers a large variety of design and dimensional combinations, and can be tailored to multiple applications in any urban environment.

Schindler 5000 is part of Schindler's new, modular-platform product range for all residential and commercial buildings, from low-to mid-rise, and from basic to sophisticated requirements, worldwide.

Key figures

Capacity	400 - 1350 kg
Travel height	Up to 70 m
Stops	Max 24 stops
Speed	1.00m/s - 1.75m/s
Drive system	Machine-room-less, eco-friendly, frequency controlled
Group size	Up to 6 cars
Entrances	One- or two-sided
Interior	3 interior design lines, fresh wall colours and wide range of fixtures, and bare car option
Number of starts	120 or 180 starts per hour



Designed for comfort – built to last

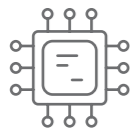
Engineered to Swiss standards

Schindler 5000 is designed, engineered and rigorously tested to ensure smooth, quiet and economical operation throughout your elevator's long life cycle, for every application, and in any environment.



Latest technologies, greater comfort

Variable frequency drive systems deliver perfectly controlled power to traction machines and door drives, extending component lifetimes and increasing energy efficiency. Schindler Suspension Traction Media is light and long-lasting, enabling the use of smaller traction machines that reduce both energy consumption and noise and vibration levels in the car.



State-of-the-art digital controller

Schindler's scalable (universal) elevator controller offers more flexibility in number of openings, number of stops, and car group size. What's more, Schindler's innovative EPIC absolute positioning system improves both reliability and maintainability.



High-quality – at every level

Contact-free sensors assure millimeter-precise leveling with the floor for safe, seamless movement of passengers and goods in and out of the elevator.



Innovative drive technology

Schindler 5000 is equipped with our innovative, regenerative drive technology.



Excellent ecological performance

Improving energy efficiency is essential to reduce the environmental impact of elevators and the buildings they serve. Regenerative drive, LED lighting and stand-by mode while parked, are eco-friendly features in all Schindler 5000 elevators.

Access control and transit intelligence

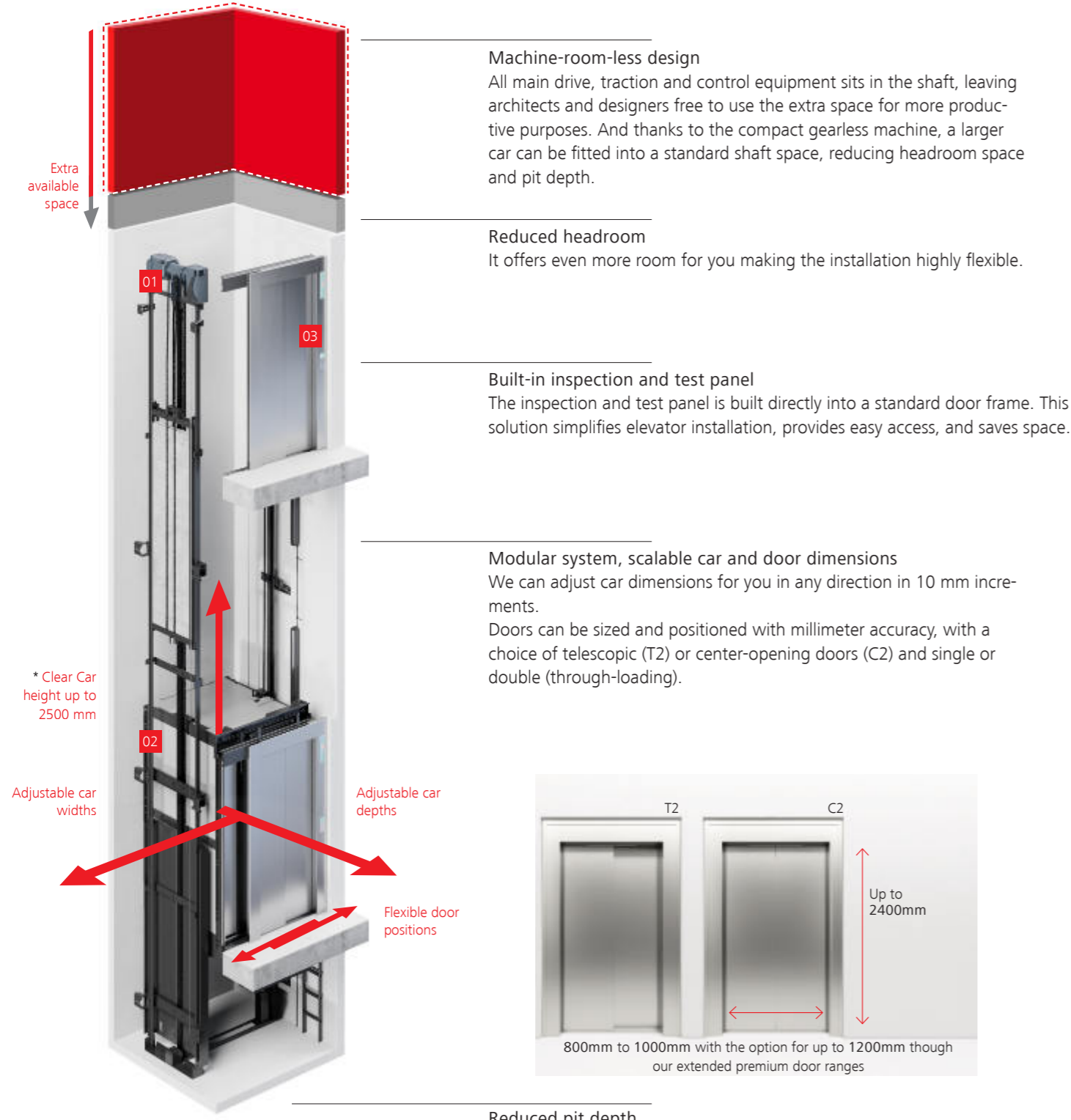
The revolutionary PORT Technology

All Schindler 5000 elevators are enabled for our revolutionary PORT Technology, with all the advantages of reduced travel time in elevators, higher passenger traffic capacity, and the potential for full building security and personalized access. PORT makes buildings more attractive, more efficient, and more valuable.



Architectural flexibility

Schindler 5000 has outstanding architectural flexibility for car, door and shaft dimensions. Less space for



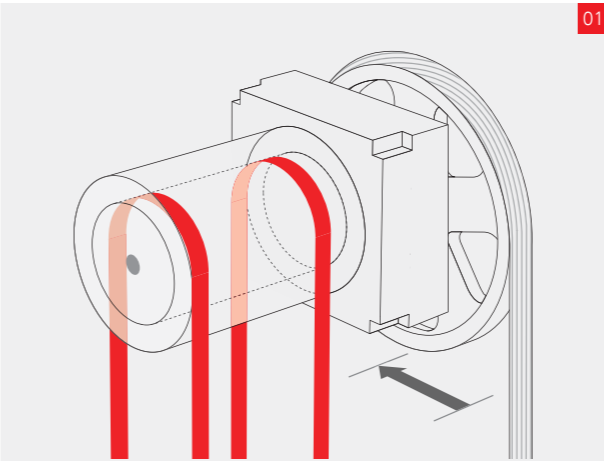
Machine-room-less design
All main drive, traction and control equipment sits in the shaft, leaving architects and designers free to use the extra space for more productive purposes. And thanks to the compact gearless machine, a larger car can be fitted into a standard shaft space, reducing headroom space and pit depth.

Reduced headroom
It offers even more room for you making the installation highly flexible.

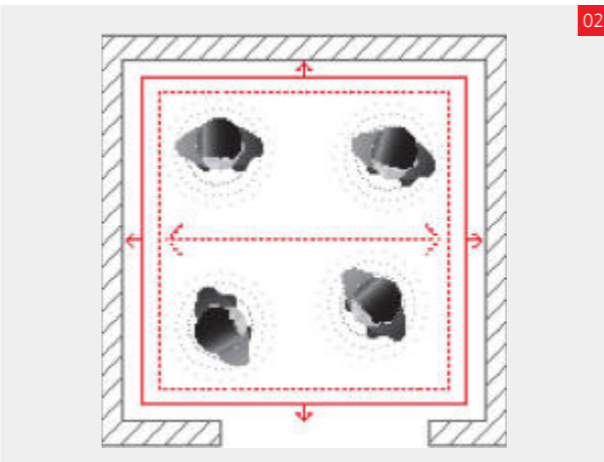
Built-in inspection and test panel
The inspection and test panel is built directly into a standard door frame. This solution simplifies elevator installation, provides easy access, and saves space.

Modular system, scalable car and door dimensions
We can adjust car dimensions for you in any direction in 10 mm increments.
Doors can be sized and positioned with millimeter accuracy, with a choice of telescopic (T2) or center-opening doors (C2) and single or double (through-loading).

Reduced pit depth
* In standard ranges AP = 2139mm / 2400mm / 2500mm & EU = 2139mm
In extended premium ranges AP & EU up to 2500mm



Smaller motor and traction sheave
Schindler's Suspension Traction Media (STM) system guarantees a quieter, smoother ride and does not require any oil or lubricant. STM also saves shaft space because of the smaller motor and traction sheave – 70% smaller than traditional systems. For passengers that means a better ride, while building owners will appreciate the increased reliability and efficiency.



More usable building space
Less space for components, more usable building space and more room for passengers. Schindler 5000's innovative platform ensures that a standard-sized shaft can carry a wider car with bigger load capacity.



Built-in inspection and test panel
Schindler 5000's inspection and test panel is built directly into a standard door frame at the top landing. This solution simplifies elevator installation, provides easy access, and saves space.

Navona
Functional and durable



For additional colours and decoration options refer to the Schindler Elevator design catalog

Times Square
Modern and versatile



Park Avenue
Sophisticated and elegant



For Additional colours and decoration options refer to the Schindler Elevator design catalog

Custom design
Design your own interior



Multiple design options

Ready-made interior design lines

Navona Functional and durable

Clarity and comfort in your car with this robust design line. Fresh colours, durable accessories, and the option of different floors make Navona an excellent choice for residential applications. Stainless steel options are also available for rear and side walls.

Times Square Modern and versatile

A contemporary look. Choose from warm or cool colours or combine to enhance contrast for more depth. Times Square adds distinctive features to any public, commercial or residential building.

Multiple design options

Ready-made or custom interior design

Park Avenue Sophisticated and elegant

A touch of class. Wooden and textured laminates or back-painted glass walls for a rich, contemporary mode. Or a luxury feel with stainless steel in seven different finishes or decorative glass. Matched lighting completes Park Avenue's elegance.

Freedom of Design

Create the Look and Feel you like
Choose an elevator design that perfectly matches your building interior. Select from Schindler 5000's three décor lines and combine your choice with our range of operating panels, handrails, lighting, mirrors and other accessories.

And for full custom designs, the Schindler 5000 bare car option allows you to add up to 30% of the car's rated load capacity for the materials and finishings of your choice.

Note: Specifications, options and colours are subject to change. All cars and options illustrated in this brochure are representative only. The samples shown may vary from the original in colour and material.

Note: Specifications, options and colours are subject to change. All cars and options illustrated in this brochure are representative only. The samples shown may vary from the original in colour and material.

Car operating panels and landing fixtures

Outfit your elevator with style

Linea 100

Linea 100 offers functional design in stainless steel. The integrated white glass display comes with large, easily readable red LED dot matrix floor indicator. Push buttons have clear red illumination when a call is recognized.

Linea 300

An upmarket user interface to enhance your elevator's looks, with an intuitive, efficient design. The display is in black glass, with buttons positioned on elegant black stainless steel, or white glass display on typical stainless steel colour finishing.

The PORT Terminal

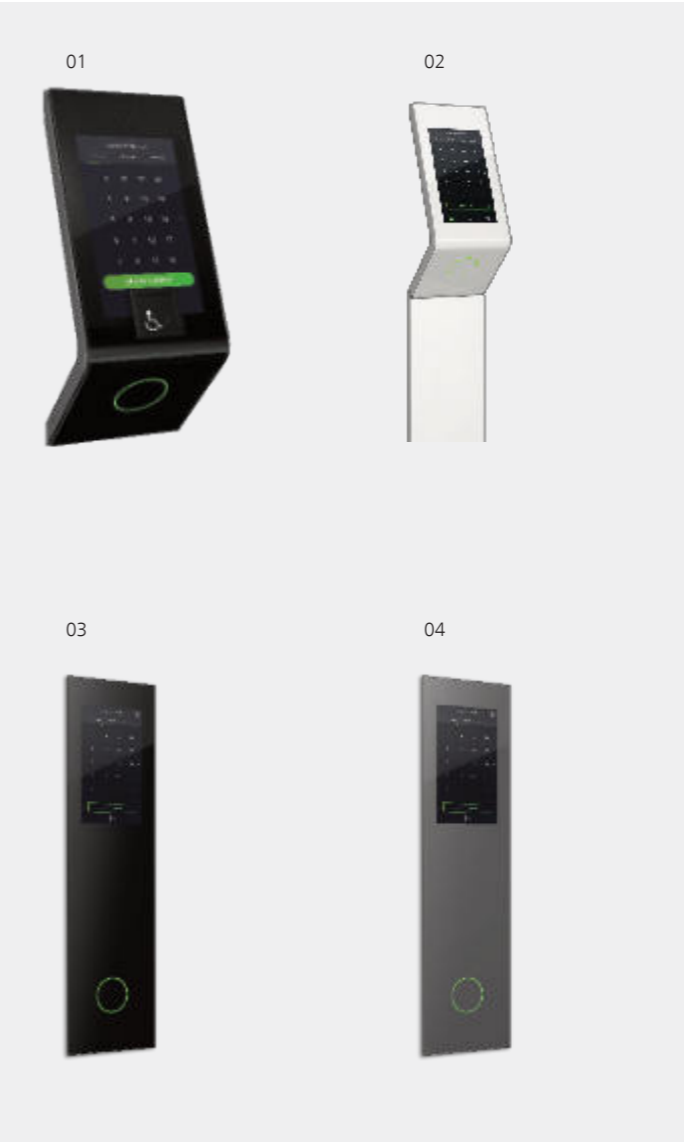
The new PORT hall call destination terminals deliver brain-power to your building. A range of PORT Terminals is available, with numerous options to optimize traffic flows. Now an established reference worldwide, PORT terminals offer elegant design, stylish ergonomics and a contemporary look.



- 01 Full height car operating panel
- 02 Half height car operating panel*
- 03 Car position & direction indicators
- 04 Landing operating panels
- 05 Horizontal car operating panel



- 01 Full height car operating panel
- 02 Car position & direction indicators
- 03 Landing operating panels



- 01 PORT 1 black wall-mounted
- 02 PORT 1 white pedestal
- 03 PORT 4 flush black
- 04 PORT 4 flush grey



Note: The availability of certain options and features are dependant on the design of the elevator as specified. Due to the modularity of Schindler 5000 elevators, some options and features may not be available due to a conflict of certain already chosen dimensions or features. Our Sales Representative will guide you through any requirements you may specifically have.

Note: The availability of certain options and features are dependant on the design of the elevator as specified. Due to the modularity of Schindler 5000 elevators, some options and features may not be available due to a conflict of certain already chosen dimensions or features. Our Sales Representative will guide you through any requirements you may specifically have.

Mirrors

Ensuring optimal appearance

Mirrors enhance the sense of space, depth and comfort in elevators.

Side wall



Half height centered**

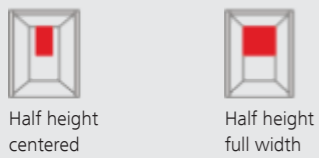
Full height centered



Full Height Last panel, left most/right most

** Only available from EU Sourcing

Rear wall



Half height centered

Half height full width



Full height middle panel

Full height left most / right most



Landing doors

For a stylish entrance

How your elevator design immerses with your building can enhance your tenants' response to the overall décor design. We offer a full range of colours to help you unleash your building's full design potential.

Landing arrangements



Choose your optimal landing arrangements for simplex and multiplex installations, surface or wall mounting.



For additional colours and decoration options refer to the Schindler Elevator design catalog

Note: The availability of certain options and features are dependant on the design of the elevator as specified. Due to the modularity of Schindler 5000 elevators, some options and features may not be available due to a conflict of certain already chosen dimensions or features. Our Sales Representative will guide you through any requirements you may specifically have.

Note: The availability of certain options and features are dependant on the design of the elevator as specified. Due to the modularity of Schindler 5000 elevators, some options and features may not be available due to a conflict of certain already chosen dimensions or features. Our Sales Representative will guide you through any requirements you may specifically have.

Handrails

A wide choice of shapes and finishes

Handrails convey a feeling of security. Schindler handrails are designed to blend with car interiors, shapes and textures, and can be mounted to the side and rear walls.



Straight
Stainless Steel Polished Mirror



Straight with rounded ends
Stainless Steel
Brushed

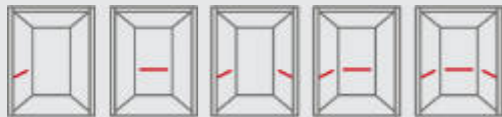


Curved
Painted Riga Grey



Customize your handrails

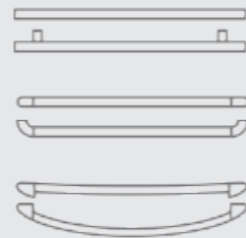
Handrails convey a feeling of security. Our handrails are designed to blend with car interiors, shapes and textures.



The handrails can be mounted in different combinations of side and rear walls, either only one handrail piece on the rear or side walls, two handrail pieces on the side walls or handrails on three walls. They can be connected straight or revolving.

For additional colours and decoration options refer to the Schindler Elevator design catalog

Choose the handrail shape you prefer:



Straight, straight with rounded ends or curved

Note: The availability of certain options and features are dependant on the design of the elevator as specified. Due to the modularity of Schindler 5000 elevators, some options and features may not be available due to a conflict of certain already chosen dimensions or features. Our Sales Representative will guide you through any requirements you may specifically have.



Planning data

AP Products - Standard sizes

GQ kg	Passengers	VKN m/s	HQ max m	ZE max	Entrance	Car			Doors		Shaft				
						BK mm	TK mm	HK mm	Type	BT mm	HT mm	BS mm	TS ⁽¹⁾ mm	HSG mm	HSK mm
400	5	1	22	7	1	1000	1100	2139	T2	800	2000-2100	1550	1550	1000	3850
630	8	1**	22**	7**	1 or 2*	1100	1400	2139	T2	800	2000-2100	1650	1800	1000	3850
										900		1700	1800		
800	11	1**	22**	7**	1 or 2*	1350	1400	2139	C2	800	2000-2100	1850	1750	1000	3850
										900		1950	1750		
1000	13	1**	22**	7**	1 or 2*	1400	1600	2139	C2	900	2000-2100	2000	1950	1100	3850
										1000		2200	1950		
										T2		1900	2000		
						1600	1400		C2	900		2050	1750		
										1000		2200	1750		
						1100	2100		C2	900		2000	2500		
1200	16	1**	22**	7**	1 or 2*	1200	2100	2139	T2	1100	2000-2100	2000	2500	1150	3850
						1200	2300		C2	900		2050	2700		3950
										1000		2150	2700		
										1100		2400	2700		
1275	17	1**	22**	7**	1 or 2*	1200	2300	2139	T2	1000	2000-2100	2000	2700	1150	3950
										1100		2100	2700		
						1350	2100		C2	900		2100	2500		
										1000		2200	2500		
										1100		2400	2500		
										1200		2610	2500		
1350	18	1**	22**	7**	1 or 2*	1650	1700	2139	T2	1200	2000 - 2100	2200	2200	1150	3950
						1200	2400		T2	1000		1900	2800		
										1100		2000	2800		
										C2		2200	2800		
										1100		2400	2800		

GQ Capacity
VKN Speed
HQ Travel height
ZE Stops
HE Interfloor distance

BK Car width
TK Car depth
HK Car height

Car Height is available in 50mm steps within each range

T2 Telescopic door, 2-part
C2 Central Opening door, 2-Part

BT Door width
HT Door height

BS Shaft width
TS⁽¹⁾ Shaft depth 1 entrance
TS⁽²⁾ TBC by Sales Representative

HSG Pit depth
HSK Headroom height for safety gear on counterweight
HSK min. + 70 mm

Shaft dimensions shown at minimum plumb, building tolerances should be added if required

Interfloor distance (HE) is:
min.2550 mm for door height 2000 mm
min.2650 mm for door height 2100 mm

Smaller shaft dimensions are possible, but are dependant on EN81-20/50 regulations. Please discuss any requirements with your local sales representative

With two entrances, the shaft depth needs to be adjusted to accommodate the rear door. Please contact your local sales representative to support with a tender drawing

* With Two entrances, the shaft depth needs to be adjusted to accommodate the rear door

** Speeds of 1,5m/s and 1,75 are available if required, please contact your sales representative for a confirmation of the required shaft sizes.
Maximum Travel for higher speeds = 40m,
Maximum stops for higher speeds = 22

Planning data

EU Products Standard - sizes

GQ kg	Passengers	VKN m/s	HQ max m	ZE max	Entrance	Car			Doors		Shaft				
						BK mm	TK mm	HK mm	Type	BT mm	HT mm	BS mm	TS ⁽¹⁾ mm	HSG mm	HSK mm
400	5	1	22	7	1	1000	1100	2139	T2	750	2000	1550	1550	1000	3800
480	6	1**	22**	10**	1	1000	1300	2139	T2	800	2000-2100	1550	1700	1000	3850
										900		1650	1700		
630	8	1**	22**	7**	1 or 2	1100	1400	2139	T2	800	2000-2100	1600	1800	1000	3850
										900		1650	1800		
675	9	1	22	7	1 or 2	1200	1400	2139	T2	800	2000-2100	1700	1800	1000	3850
										T2		1750	1800		
1000	13	1	22**	7**	1-2	1100	2100	2139	T2	900	2000-2100	1750	2500	1100	3850
1125	15	1	22**	7**	1-2	1200	2100	2139	T2	900	2000-2100	1800	2500	1100	3850
1200	16	1	22**	7**	1 or 2*	1200	2300	2139	C2	900	2000-2100	2000	2700	1100	3950
										1000		2200	2700		
										1100		2400	2700		
1350	75	1	22**	7**	1 or 2*	1650	1700	2139	T2	1200	2000 - 2100	2200	2200	1150	3950
						1200	2400		T2	1000		2000	2800		
										1100		2200	2800		
										C2		2200	2800		
										1100		2400	2800		

BK Car width
TK Car depth
HK Car height

Car Height is available in 50mm steps within each range

T2 Telescopic door, 2-part
C2 Central Opening door, 2-Part

BT Door width
HT Door height

BS Shaft width
TS⁽¹⁾ Shaft depth 1 entrance
TS⁽²⁾ TBC by Sales Representative

HSG Pit depth
HSK Headroom height for safety gear on counterweight
HSK min. + 70 mm

Shaft dimensions shown at minimum plumb, building tolerances should be added if required

Interfloor distance (HE) is:
min.2550 mm for door height 2000 mm
min.2650 mm for door height 2100 mm

Smaller shaft dimensions are possible, but are dependant on EN81-20/50 regulations. Please discuss any requirements with your local sales representative

With two entrances, the shaft depth needs to be adjusted to accommodate the rear door. Please contact your local sales representative to support with a tender drawing

* With Two entrances, the shaft depth needs to be adjusted to accommodate the rear door

** Speeds of 1,5m/s and 1,75 are available if required, please contact your sales representative for a confirmation of the required shaft sizes.
Maximum Travel for higher speeds = 40m,
Maximum stops for higher speeds = 22



Schindler Sub Saharan Africa

For more information, please contact your local office

Head Office

24 Fricker Road
Illovo
Johannesburg
South Africa
2196

Call Centre: 0860 102 513
Tel: +27 10 346 3225
Email: sales@za.schindler.com

Call Centre - South africa

24 Fricker Road
Illovo
Johannesburg
South Africa
2196

Main number: 0860 102 513
Backup Number: +27 87 087 6999

Cape Town

1 Rainbow Close, Rainbow Park
Racecourse Road, Montague Gardens
Cape Town
7441

Regional Manager Cape Town
Tel: +27 21 552 4831
Cell: +27 82 337 1377

Namibia

Cnr of Frans Idongo and John Meinert
Street No 84
Windhoek West
Namibia

Office Tel: +264 61 240 362
Call Centre (Primary) Tel: 084 000 9001
Call Centre (backup) Tel: 084 000 9002
Email: sales@za.schindler.com

Midrand

Unit E, Alphen Square West
338 George St Randjespark
Midrand
1683

Regional Manager Gauteng & Bloemfotein
Tel (1): +27 12 481 9920
Tel (2) +27 10 346 3335
Cell: +27 82 418 0128

Gqeberha

651 Cape Road,
Hunters Retreat Business Park, Parsonsvelei
Gqeberha
6001

Branch Supervisor Port Elizabeth
Tel: +27 41 484 5156
Cell: +27 82 377 8151

Botswana

Plot 20695
Broadhurst Industrial, Block 3
Gaborone
Botswana

Office Tel: +26 7 393 0283
Call Centre (Primary) Tel: 373 1350
Call Centre (backup) Tel: 373 1351
Email: sales@za.schindler.com

Durban

1 The Boulevard
Westway Office Park
Westville
3629

Regional Manager Durban
Tel: +27 31 465 3106
Cell: +27 71 674 9378

Export Department

27 Hippo Road
Springfield
Johannesburg
South Africa
2190

Africa Export Manager
Tel: +27 11 681 8888
Cell: +27 82 379 7328